



SMART UNIFIED INFRASTRUCTURE MONITORING

Unified view of IT infrastructure with real-time monitoring, service impact analysis and alerting

With more organizations opting to moving their applications to cloud-based environments, there is a fast-growing uptake in use of data center and cloud infrastructure. As a result, IT administrators face many challenges when monitoring the performance, security and availability of such infrastructure.

Enterprises face challenges in managing multiple toolsets and getting the right expertise to manage diverse and dynamic requirements.

Data Center and Cloud providers are challenged in ensuring that SLAs are within agreed levels and that MTTR is low with efficiency of IT operations being high.

KEY CHALLENGES

- **Managing multiple toolsets** – IT teams use multiple discrete tool sets but are still unable to get a unified view of the complete environment for effective management.
- **Managing legacy and new technologies together** – IT teams’ expertise and ability to manage across traditional as well as multiple virtualized environments proves challenging.
- **High MTTR and lower customer satisfaction** – Without accurate measurements and correlation of events, there are typically multiple handoffs between IT and Network Admin teams.

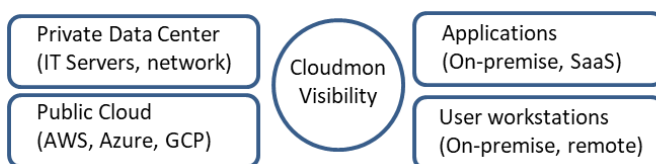


Scenario 1 – On-prem and Cloud-based IT infrastructure



Scenario 2 – Data Center IT infrastructure management

Cloudmon ITM is a unified proactive infrastructure monitoring and diagnostic solution for enterprises, data centre and cloud providers that presents the live status of all infrastructure entities and provides comprehensive diagnostics information for troubleshooting.



KEY USE CASES

- **IT Tool Consolidation** – Cloudmon ITIM is a single tool that comprehensively covers:
 - Monitoring across Cloud, Virtual and legacy server environments
 - Network device monitoring for Health and Bandwidth
 - Remote user device monitoring for Health and System Performance
 - WAN IP End-point monitoring for Availability and QoS

- **Remote workforce device monitoring** – Cloudmon ITIM helps effectively monitor all remote devices:
 - Monitoring of remote devices proactively for Health and Performance
 - Detect anomalies on device, thus safeguarding against potential misuse
 - Better Troubleshooting based on measurements on remote device

- **Data Center monitoring** – Cloudmon ITIM performs pro-active monitoring of critical network infrastructure :
 - Detect network QoS issues before users experience them
 - Benchmark network health before and after deployment
 - Continuous monitoring and measurement of network QoS metrics for all remote sites
 - Reduces MTTR
 - Isolate network and application issues
 - Isolate LAN and WAN issues
 - Monitor gateways links and WAN links

- **VoIP monitoring** – Cloudmon ITIM helps in detecting network delays and packet loss:
 - Monitor call path network performance
 - Determine where network QoS drops
 - Continuous measurement of the network QoS metrics
 - Reduce MTTR
 - Isolate network and application issues
 - Isolate LAN and WAN issues

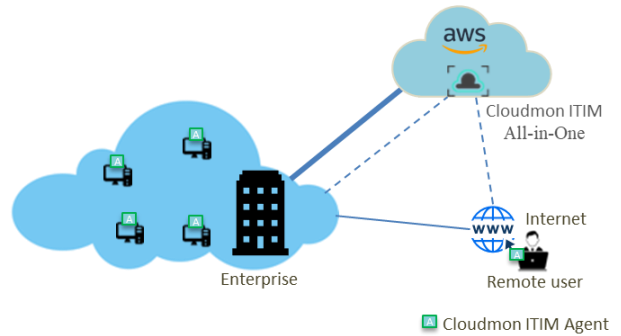


Figure 1 – Sample Cloudmon ITIM deployment

KEY DIFFERENTIATORS

- **High Visibility Proactive Monitoring** – Full observability of network and server performance degradations within and across data centers
- **Unified Visualization** – Correlate status of physical servers, virtual workloads and networks in a unified dashboard
- **Cloud and Vendor Agnostic** – Supports private and public cloud environments without dependencies on vendor specificities

KEY BENEFITS

- **Reduce Total Cost of Ownership (TCO)** – Lower support efforts and licensing costs of multiple tools
- **Improve Mean Time Taken to Repair (MTTR)** – Quicker troubleshooting with diagnostic information, data correlation and historical trends
- **Intelli-alerts** – Remediate potential disruptions before they affect users
- **Improve availability** – Pro-actively monitor network QoS of IaaS / PaaS / SaaS endpoints
- **Remote workforce productivity** - Monitor and troubleshoot remote user devices
- **Critical resource observability** – Ensure full visibility of critical resources
- **Optimize resources** – Key performance indicators (KPIs) help administrators to optimize infrastructure – without over- or under-provisioning

Cloudmon ITIM uses the following mechanisms to collect metrics and event information and push them to the Cloudmon ITIM controller:

- **Cloudmon Probe** software to collect accurate measurements across the environment. Probe software runs in public cloud such as AWS or on customer provided x86 based server. Typically, one probe is capable of monitoring about 1000 end points.
- **Cloudmon Agent** software is a lightweight executable that resides on servers and host computers for collection of system KPIs and health parameters.
- **SNMP** could be used to monitor devices such as servers, routers and switches.

Cloudmon ITIM controller works in public cloud such as AWS or may be installed on-premise on customer provided x86 based server. Cloudmon ITIM controller provides metrics related to server, VM, network devices and the connectivity between them. It provides key performance indicator metrics and threshold crossing alerts on a unified dashboard. It also correlates the metrics and provides valuable inferences based on the correlation.

Cloudmon ITIM All-in-One includes both the Controller and Probe in one distribution.

With **Cloudmon ITIM**, IT administrators can confidently and efficiently monitor and diagnose network, and server performance. **Cloudmon ITIM** is the only tool that IT administrators really need to get a unified view of the data center and cloud infrastructure.

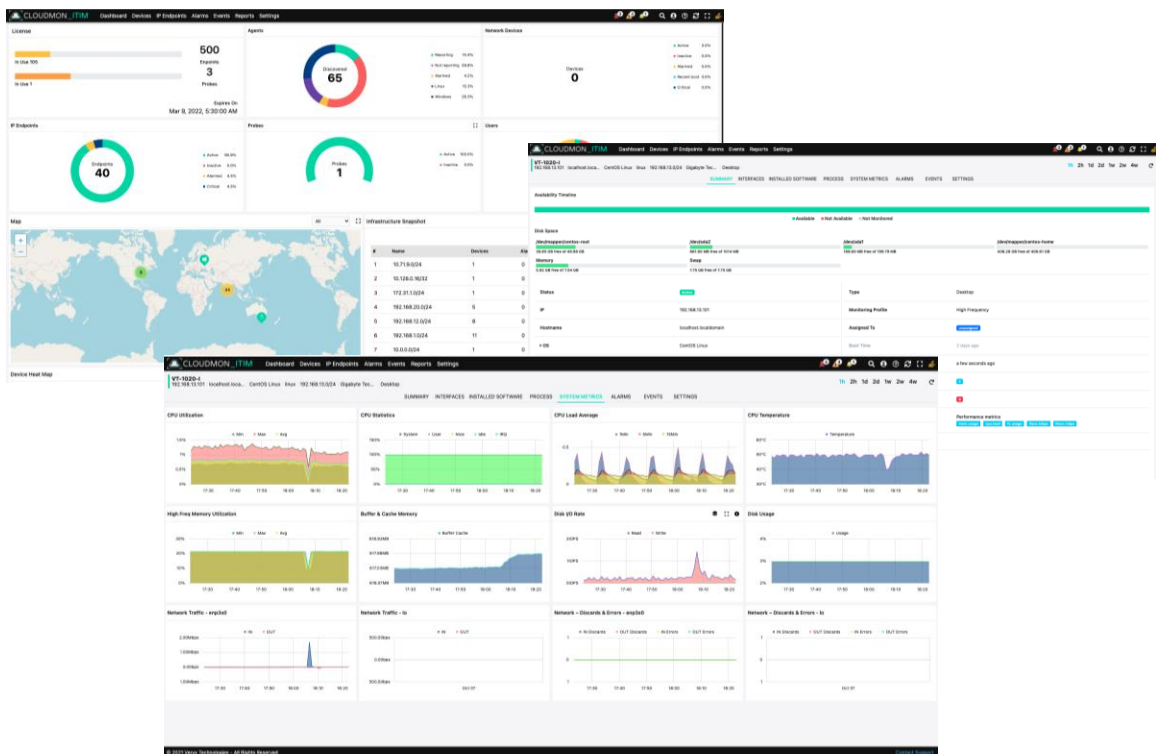


Figure 2 – Sample Cloudmon ITIM reports

Cloudmon ITIM is offered in three variants- BASIC (free), STANDARD and PRO as below:

FEATURE	BASIC	STANDARD	PRO
Server and VM monitoring	Yes	Yes	Yes
Network device monitoring	Yes	Yes	Yes
Remote user device monitoring	Yes	Yes	Yes
Agent-less & Agent-based Infrastructure monitoring	Yes	Yes	Yes
Automated agent discovery	Yes	Yes	Yes
Network path trace and path delays	Yes	Yes	Yes
SLA Management	Yes	Yes	Yes
Multi-tenancy	Yes	Yes	Yes
Dashboards	Yes	Yes	Yes
Reporting	Yes	Yes	Yes
Intelligent alerting - noise reduction	Yes	Yes	Yes
Notification - Email, Teams, Slack, Opsgenie, Zoho Desk	Yes	Yes	Yes
Automation of remediation	Yes	Yes	Yes
IaaS availability monitoring (Synthetic)	Limited*	Yes	Yes
Critical resource monitoring (up to 1sec polling interval)	No	Limited ^Δ	Yes
Synthetic Network QoS monitoring (IPv4)	Limited*	Yes	Yes
Synthetic Network QoS monitoring (IPv6)	No	No	Yes
Multi-site (distributed)	No	Yes	Yes
Max nodes supported	25	up to 500	> 500
One-touch installation (AWS / on-premise)	Yes	Yes	Yes
Premium technical support	No	Yes	Yes

Note:

* limited to total of 2 endpoints (IaaS or Network links)

Δ limited to 10% of licensed nodes (example, for 100 pack license - max of 10 endpoints can be monitored)

System Requirements – Controller
AWS Marketplace based AMI
EC2 instance type - minimum t3.medium† OS - CentOS 7.7, x86-64bit
Customer on-premise installation
Minimum Intel® i5†, OS - CentOS 7.7, x86-64bit 2GB RAM (recommended 4GB), 20GB HDD

System Requirements – Probe
Minimum Intel® i5†, OS - CentOS 7.7 2GB RAM (recommended 4GB), 20GB HDD
Operating Systems – Agent
Linux: CentOS 6+, RHEL 6+, Fedora Core 20+, Amazon Linux 2
Windows: Windows 7+, Windows server 2012

Note:

The above mentioned is minimal requirement, the system requirements various based on the maximum number of nodes to be monitored.

Refer [Cloudmon ITIM System requirement](#) for more information.

ORDERING INFORMATION

PART NUMBER	STANDARD
ITIM_STD_50	Veryx Cloudmon ITIM Standard Infrastructure Monitoring up to 50 end points
ITIM_STD_100	Veryx Cloudmon ITIM Standard Infrastructure Monitoring up to 100 end points
ITIM_STD_250	Veryx Cloudmon ITIM Standard Infrastructure Monitoring up to 250 end points
ITIM_STD_500	Veryx Cloudmon ITIM Standard Infrastructure Monitoring up to 500 end points

PART NUMBER	PRO
ITIM_PRF_1000	Veryx Cloudmon ITIM Pro Infrastructure Monitoring up to 1000 end points
ITIM_PRF_2500	Veryx Cloudmon ITIM Pro Infrastructure Monitoring up to 2500 end points
ITIM_PRF_5000	Veryx Cloudmon ITIM Pro Infrastructure Monitoring up to 5000 end points
ITIM_PRF_10000	Veryx Cloudmon ITIM Pro Infrastructure Monitoring up to 10000 end points
ITIM_PRF_XL	Veryx Cloudmon ITIM Pro Infrastructure Monitoring unlimited end points



FOR MORE INFORMATION OR TO SCHEDULE A DEMO CONTACT:

sales@veryxtech.com or any of our authorized resellers.

About Veryx Technologies

Veryx is an innovative provider of visibility, security, monitoring and testing solutions for enterprises, cloud providers, data centers and Telco's, to efficiently manage their networks and infrastructure. Veryx is constantly innovating to provide highly automated and flexible solutions, thereby customers can focus on what they do best – grow their business. Our unique product design and architecture, coupled with intuitive interfaces, provides highly efficient and capable platforms. Veryx has technology and marketing partnerships with global players in the communications networking industry.

Veryx® and Cloudmon® are trademarks of Veryx Technologies. All other trademarks of respective owners are acknowledged.

Email : info@veryxtech.com

USA : +1 267 440 0140

Web : www.veryxtech.com

International : +44-203-371-8691