



## Veryx ATTEST™ IPv6-ReadyTest Conformance Test Suite DATASHEET

**Veryx ATTEST-CTS IPv6-ReadyTest** provides equipment manufacturers and service providers an easy and efficient solution to prepare towards IPv6 Ready Logo certification. ATTEST enables significant speeding up of testing cycles and reduces the "time-to-market".

ATTEST-CTS IPv6-ReadyTest helps equipment manufactures and device integrators to determine the readiness of their IPv6 host and routing functionalities. It verifies whether the conformance and interoperability of device under test, functions as per IPv6 Forum's IPv6 Ready Logo recommendation, phase – 2 (Gold logo).

Veryx offers a fully automated test suite for verification of both Host and Router implementations. The test suite verifies for optimum compliance by a series of tests, including the "MUST" and the recommended "SHOULD" clause as per the IETF specifications. The test suites are designed to align one to one with IPv6 Ready Logo test specification (core IPv6 Protocols).

ATTEST-CTS IPv6-ReadyTest (Router) test suite contains 328 test cases and IPv6-ReadyTest (Host) suite contains 384 test cases and these test cases are designed such that it requires minimal effort of integrating ATTEST with the device under test.

### SPECIFICATIONS

- ★ IETF RFC 2460, 4861, 4862, 1981, 4443
- ★ IPv6 Ready Logo Core Protocols test specification for Phase 2 (GOLD) Revision 4.0.6

### IPv6-ReadyTest TESTS

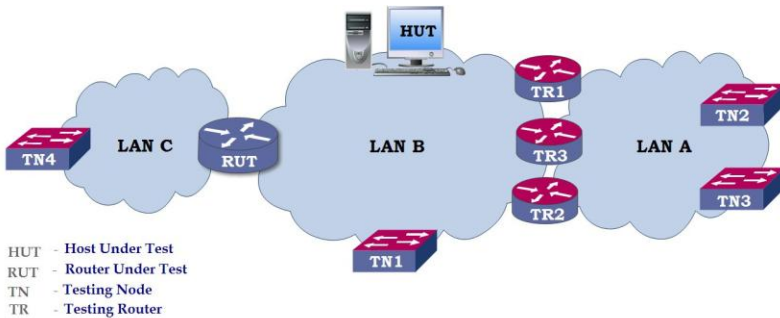
- ★ IPv6 Header, Extension Headers and Options
- ★ Fragmentation, Address Resolution and Neighbor Unreachability Detection
- ★ Router and Prefix Discovery
- ★ Redirect Function, Address Auto-configuration and Duplicate Address Detection
- ★ Router Advertisement Processing and Address Lifetime
- ★ Path MTU discovery
- ★ ICMPv6 Error message handling
- ★ Inter-operability testing

### MINIMUM PLATFORM

- ★ ST1000 / ST2000 / XC1000 / XB2000
- ★ 3 Ethernet ports

### ORDERING INFORMATION

PRODUCT	PART NUMBER
ATTEST-CTS IPv6ReadyTest-Host	CTS-IPv6RTH-B
ATTEST-CTS IPv6ReadyTest-Router	CTS-IPv6RTR-B



**Figure 1: Sample IPv6 Deployment Scenario**

ATTEST IPv6-ReadyTest cases verify the Neighbor Discovery Protocol for IPv6, including address resolution, neighbor unreachability detection, Neighbor State Machine maintenance, router specific implementation and handling of Neighbor Discovery packets. In addition, the test cases perform conformance and interoperability testing for IPv6 Path MTU discovery, Stateless Address Auto configuration and Router Alert option.

ATTEST IPv6ReadyTest Conformance Test Suite is written in industry standard Tcl scripts. Well defined APIs and source files provide the flexibility to add, customize or modify the test cases for specific requirements.

Together with other ATTEST-CTS and ATTEST-XP test suites for IPv6 protocols, Veryx provides one of the widest ranges of test suites for verification of IPv6 functionality. Test suites for Carrier Ethernet, IPv4, and Layer-2 bridging are also available.

#### About Veryx Technologies

Veryx Technologies (formerly Net-O<sub>2</sub>Technologies) provides innovative Verification and Measurement Solutions for the global communications industry. ATTEST solutions verify networking equipment being used for Access, Carrier Ethernet, Data Center, Edge, Enterprise, Industrial and Security. The unique offerings from Veryx enable customers to reduce the "time-required-to-test" and enhance their "time-to-market".

Veryx™ and Veryx ATTEST™ are trademarks of Veryx Technologies. All other trademarks of respective owners are acknowledged.

Email : [info@veryxtech.com](mailto:info@veryxtech.com)  
 Web : [www.veryxtech.com](http://www.veryxtech.com)

USA : +1-267-440-0140  
 International : +44-203-371-8691

