



## Veryx ATTEST™ CFM Conformance Test Suite DATASHEET

Veryx ATTEST™-CTS Connectivity Fault Management (CFM) automated test suite provides Carrier Ethernet Equipment Manufacturers and Service Providers an easy and efficient solution for the verification of CFM implementation in devices deployable in the Carrier Ethernet network. ATTEST enables significant speeding up of testing cycles and reduces the "time-to-market".

Veryx ATTEST CFM Conformance Test Suite is designed for conformance testing of Connectivity Fault Management using ATTEST -- a powerful test framework that requires minimal time for setup and enables efficient use of time and resources.

Veryx has devised about 198 test cases that comprehensively test for CFM conformance. These test cases have been grouped into 9 convenient test groups based on the IEEE specifications for each category of functions.

ATTEST CFM test cases verify CFM support in the following implementation scenarios:

1. Up Maintenance Association End Point (Up MEP)
2. Down Maintenance Association End Point (Down MEP)
3. Maintenance Domain Intermediate Point (MIP)

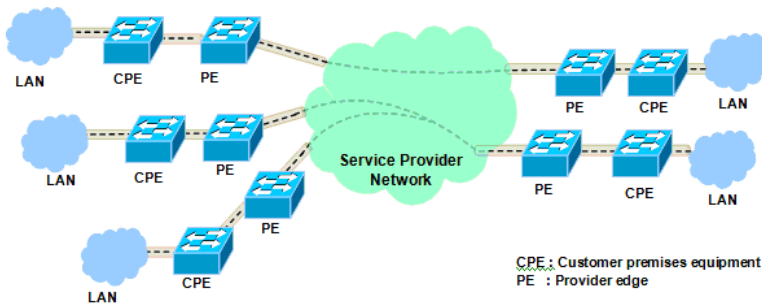


Figure 1: An example of a network with CFM Functionality

ATTEST CFM Test cases verify the generation and handling of valid and invalid CFM Continuity Check messages (CCM), Loop-back messages (LBM), Loop-back reply messages (LBR), Link trace messages (LTM), Link trace reply messages (LTR) and Fault Alarms. Tests also verify the support for configuring the CFM management objects as per CFM requirements.

ATTEST CFM Conformance Test Suite is written in industry standard Tcl scripts. Well-defined APIs and source files provide the flexibility to add, customize or modify the test cases for specific requirements. Together with ATTEST-CTS EFM-OAM, Y.1731 and Provider Bridges, Veryx provides one of the most comprehensive solutions for conformance testing of Carrier Ethernet Switches. Layer 3 IPv4, Layer 3 IPv6 and Layer 2 Test Suites are also available.

### About Veryx Technologies

Veryx Technologies (formerly Net-O2 Technologies) provides innovative Verification and Measurement Solutions for the global communications industry. ATTEST solutions verify networking equipment being used for Access, Carrier Ethernet, Data Center, Edge, Enterprise, Industrial and Security. The unique offerings from Veryx enable customers to reduce the "time-required-to-test" and enhance their "time-to-market".

Veryx ATTEST™ is the trademark of Veryx Technologies. All other trademarks of respective owners are acknowledged.

Email : [info@veryxtech.com](mailto:info@veryxtech.com)

Web : [www.veryxtech.com](http://www.veryxtech.com)

USA : +1-408-850-1247

International : +44-203-371-8691



### SPECIFICATIONS

IEEE 802.1ag-2007

### CFM TESTS

- \* CFM PDU Frame Format
- \* Continuity Check Protocol - Transmission
- \* Continuity Check Protocol - Reception
- \* Fault Alarm
- \* Loop back Protocol - Transmission
- \* Loop back Protocol - Reception
- \* Link Trace Protocol - Transmission
- \* Link Trace Protocol - Reception
- \* CFM Management

### PLATFORM REQUIREMENTS

- \* ATTEST 6.x Framework
- \* 4 Ethernet ports
- \* Serial or additional Ethernet port for DUT management